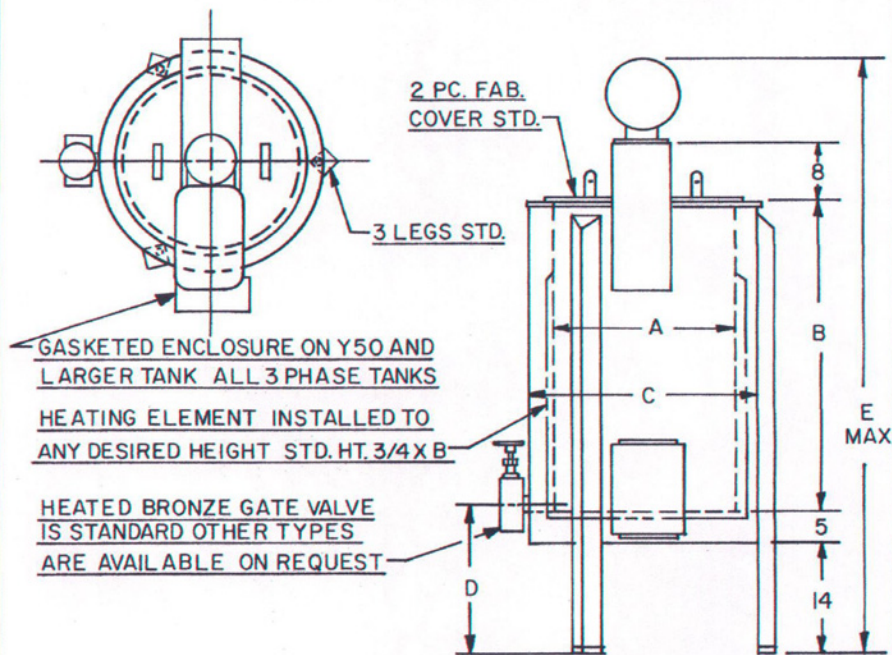


Catalog Number	Capacity		Legs	A	B	C	D	E	Valve
	Rated	Full							
50M-W	5	5.3	2 x 2 x 1/4	13 1/2	8 1/2	18	19 1/2	46	1
51M-W	10	10.4	2 x 2 x 1/4	13 1/2	16 3/4	18	19 1/2	54	1
52M-W	15	15.7	2 x 2 x 1/4	16	18	20 1/2	19 3/4	55	1 1/2
53M-W	25	25.6	2 x 2 x 1/4	18 1/2	22	23	19 3/4	59	1 1/2
Y50M-	50	54.8	3 x 3 x 1/4	24	28	29 1/2	20	65	2
Y75M-	75	82	3 x 3 x 1/4	24	42	29 1/2	20	79	2
Y100M-	100	110	3 x 3 x 1/4	30	36	35 1/2	20	73	2
Y150M-	150	158	3 x 3 x 1/4	36	36	42	20	75	2



This drawing and all components within are the sole property of Sta-Warm Electric Company. No reproductions or copies of any kind are permissible without written consent from Sta-Warm Electric Company

Sta-Warm Electric Company
Ravenna, Ohio 44266
**COMPOUND MELTER
WITH AGITATION**

SIZE: A DATE: DWG NO. 38A1064-15A REV 1

SCALE: NONE DRAWN BY: S. F. S. SHEET: 1 OF 1